

Setting a Good Password with My Child/Ward



How to Create a Strong Password?

1. Use a mix of characters by including upper case, lower case and symbols.
2. Creating a passphrase that is unique to your child/ward



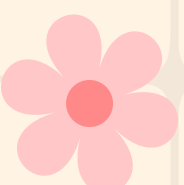
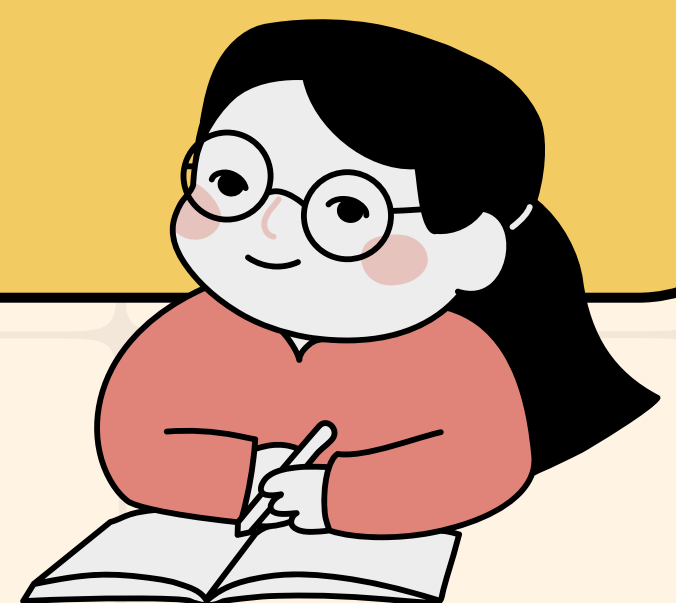
Interesting Ways to Remember My Password!

1. Use of Stories
(For example: I have 2 cats!)



2. Use of Acronyms
(For example: I have 2 beautiful cats at home!
-----> Ih2bcah!)

3. Use Favourite Things
(For example: CatsLegoPink@)



I need help to reset password!



Helpline Available:

For SLS / student ICON accounts:
ict@xps.edu.sg

For subject specific platforms
(Koobits / ezhishi etc), please contact
various subject teachers.

Not sure who to look for? Fret not!
You may contact our school office at
+65 6758 8837. Your request will be
forwarded accordingly.

*Please note that it may take up to 3 working
days to process your requests. Thank you for
your kind understanding in advance.

